

Thanks to our sponsor  Bristol-Myers Squibb

LOCATION & ACCOMMODATION

HOTEL WEITZER, Grieskai 12 - 16, 8020 Graz; www.hotelweitzer.com

Accommodation: We have reserved a limited number of rooms at special rates for course participants at Hotel Weitzer and in other selected hotels in the vicinity. A code for application will be provided.

COURSE FEES

Part I (Tumour Pathology)	June 22 – 24, 2017	€ 600,00
Part II (Non-tumour Pathology)	June 26 – 28, 2017	€ 600,00
Whole course (Part I + II)		€ 950,00

The course fee includes daily lunch buffets and coffee breaks (except on Sunday), "Welcome Buffet" (Part I), "Get together Dinner" (Part II), online course material, printed course manuals for booked course parts, and the course certificate.

Participants as well as accompanying persons are welcome to join **SOCIAL EVENTS:**

Welcome Evening Buffet	June 22, 2017	€ 25,00*
Excursion (at course free Sunday) (day trip by bus in the surroundings of Graz; meals included)	June 25, 2017	€ 30,00**
Get-together Dinner	June 27, 2017	€ 45,00*

*Fee accompanying persons, participants free of charge;

**Fee participants & accompanying persons

COURSE FELLOWSHIP

Reduced or waived course fees and (partially) funded hotel expenses will be supported by an educational grant provided by the course. There are specific regulations and conditions.

Inquiries: Please contact the organizers by email, helmut.popper@medunigraz.at or edith.kleinferchner@medunigraz.at

CONTACT / REGISTRATION & PAYMENT

Course office: Ms Edith Kleinferchner
Institute of Pathology - Medical University of Graz
Auenbruggerplatz 25, 8036 Graz, Austria
E-mail: edith.kleinferchner@medunigraz.at

Very limited seating! Early registration is recommended.

Seating at the program is on a first come, first served basis and will definitely be assigned based on the date of payment of the course fee. The invoice including terms of payment and information about accommodation will be mailed to pre-registrants in the order of their applications. After payment has been received a written confirmation will be send to all registrants.



Medical University of Graz

POSTGRADUATE COURSE

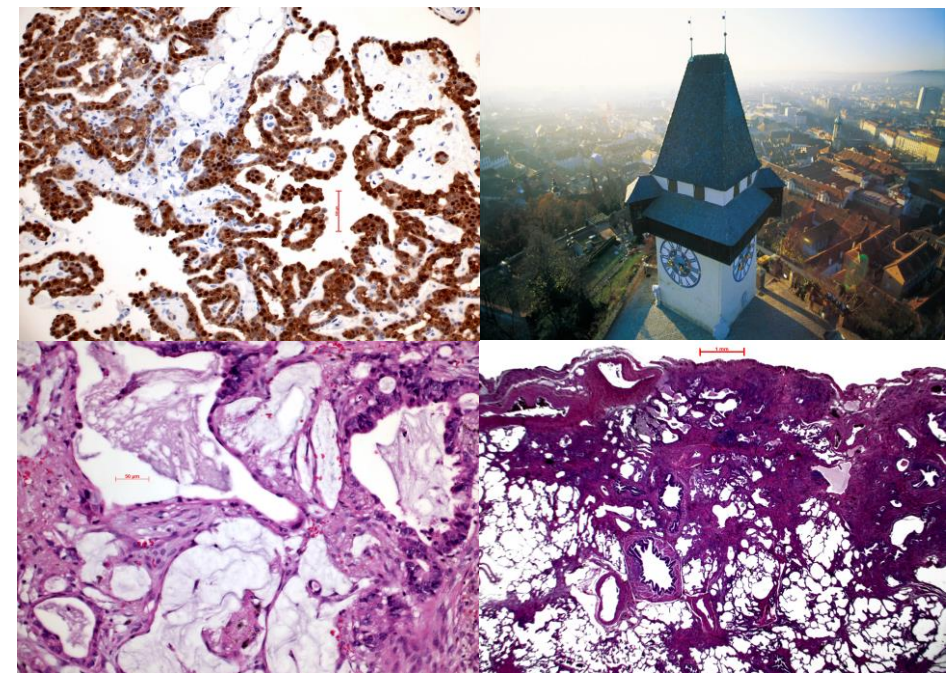


LUNG & PLEURAL DISEASES

WITH VIRTUAL MICROSCOPY

Part I (Tumour Pathology) June 22 – 24, 2017
Part II (Non-tumour Pathology) June 26 – 28, 2017

Graz, Austria



Course Director

Helmut H. Popper, MD, Graz, Austria

Course Faculty

Henry D. Tazelaar, MD, Phoenix, USA

Ulrike Gruber - Moesenbacher, MD, Feldkirch, Austria

Luka Brcic, MD, Graz, Austria

COURSE OBJECTIVES

This two-part course will run for six days and will cover

- common and rare lung and pleural diseases
- biopsy
- cytology
- molecular diagnosis

Each part will consist of lectures, case teaching and discussions.

Slides will be made available online prior to the course and you may also opt to view them online during the course using your electronic device.

Each participant should bring her/his own laptop!

For those who prefer a direct and personal view of the glass slides a few microscopes will be available at the course location.

This course is designed for trainees as well as for experienced colleagues. The course language is English.

Course parts can be booked separately.

PROGRAM

Part I (Tumour Pathology) June 22 – 24, 2017

This three-day course part will be devoted to common and rare lung and pleural tumours; tumours of childhood will also be covered.

Furthermore challenging cases contributed by the participants will be discussed – *Bring your difficult case*.

Biopsy diagnosis will be done using an interactive internet based system for digital microscopy.

Part II (Non-tumour Pathology) June 26 – 28, 2017

These three days will cover interstitial lung diseases such as, bronchiolitis-ILD, idiopathic interstitial pneumonias, rare pulmonary and pleura non-tumorous diseases, granulomatous lung diseases, emphysema and COPD. Altopediatric pulmonary pathology will be discussed.

Case presentations of interstitial lung diseases combined with biopsy interpretation will be included.

Bring your difficult case for an onsite discussion.

The impact of molecular pathology and immunohistochemistry in lung pathology will be discussed during the conference for each part.

WITH VIRTUAL
MICROSCOPY

With confirmation of payment you will receive an email notification providing the link and password required to study approximately 300 cases. You may also opt to view the cases online during the course using your electronic device. WLAN internet access will be provided at no additional charge.

ACCREDITATION / COURSE CERTIFICATE

The Austrian Medical Chamber has granted 56 credit points (DFP) to the course (28 DFP Part I, 28 DFP Part II).

European CME credits by the EACCME (European Accreditation Council for Continuing Medical Education) have been requested. The accreditation process is in progress.

Participants from the USA:

Through an agreement between the European Union of Medical Specialists and the American Medical Association, physicians may convert EACCME credits to an equivalent number of AMA PRA Category 1 Credits™

Participants from Canada:

Live educational activities, occurring outside of Canada, recognized by the UEMS-EACCME for ECMEC credits are deemed to be Accredited Group Learning Activities (Section 1) as defined by the Maintenance of Certification Program of The Royal College of Physicians and Surgeons of Canada

COURSE DIRECTOR

Helmut H. Popper, M.D., Head of Research Unit for Molecular Lung And Pleura Pathology, Institute of Pathology, Medical University of Graz, Austria

GUEST FACULTY

Henry D. Tazelaar, M.D., Professor and Chair Department of Laboratory Medicine and Pathology, Mayo Clinic College of Medicine and Science, Phoenix, Arizona, USA

Ulrike Gruber-Moesenbacher, M.D., Feldkirch, Austria

Luka Brcic, M.D., Institute of Pathology, Medical University, Graz, Austria

MORE QUESTIONS?

Please contact the organizers:

helmut.popper@medunigraz.at or edith.kleinfurchner@medunigraz.at

GETTING TO GRAZ BY PLANE

For scheduled flights to Graz see <http://www.flughafen-graz.at>

MORE INFORMATION ABOUT GRAZ <http://www.graztourismus.at>