

LOCATION & ACCOMMODATION

HOTEL WEITZER (Conference room 'Styria')

Grieskai 12 - 16, 8020 Graz; <https://www.hotelweitzer.com>

Accommodation: It is reserved a limited number of rooms at special rates for course participants at Hotel Weitzer and in other selected hotels in the vicinity. A code for application will be provided along with confirmation of pre-registration.

COURSE FEES

Part I (Tumour Pathology)	June 18 – 20, 2020	€ 600,00
Part II (Non-tumour Pathology)	June 22 – 24, 2020	€ 600,00
Whole course (Part I & II)		€ 950,00

The course fee includes daily lunch buffets and coffee breaks (except on course free Sunday), "Welcome Buffet" (Part I), "Get together Dinner" (Part II), online course material, printed course manuals for booked course parts, and the course certificate.

Participants as well as accompanying persons are welcome to join SOCIAL EVENTS

Welcome Evening Buffet	June 18, 2020	€ *30,00
Excursion (at course free Sunday) (day trip by bus in the surroundings of Graz; entrances & meals included)	June 21, 2020	€ **70,00
Get-together Dinner	June 20, 2020	€ *50,00

*participants free of charge; **Fee participants & accompanying persons

COURSE FELLOWSHIP

For residents from lower income countries reduced or waived course fees and / or (partially) funded hotel expenses will be supported by an educational grant provided by the course.

Inquiries: Contact the organizers by E-mail:

helmut.popper@medunigraz.at or edith.kleinferrchner@medunigraz.at

CONTACT / REGISTRATION & PAYMENT

Course office: Ms Edith Kleinferrchner
Diagnostic & Research Institute of Pathology –
Medical University of Graz
Neue Stiftingtalstraße 6, 8010 Graz, Austria
E-mail: edith.kleinferrchner@medunigraz.at

Limited seating! Early pre-registration is recommended.

Seating at the program is on a first come, first served basis and will definitely be assigned based on the date of payment of the course fee. Invoices, however, including terms of payment will not be issued before January 15th, 2020. Seats of confirmed pre-registrants remain reserved in the order of their applications.



Medical University of Graz

POSTGRADUATE COURSE

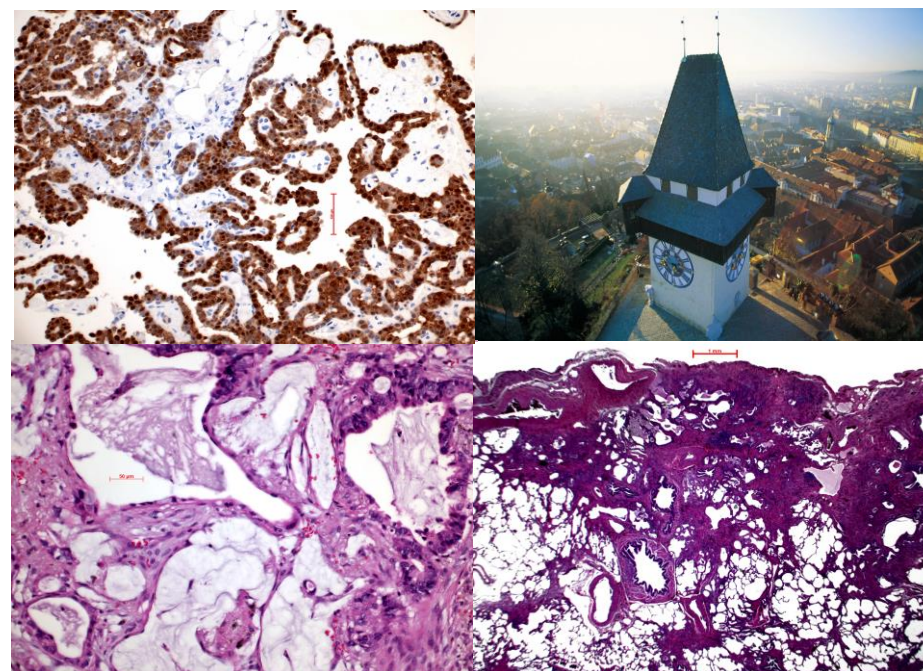


LUNG & PLEURAL DISEASES

WITH VIRTUAL MICROSCOPY

Graz, Austria

Part I (Tumour Pathology) June 18 – 20, 2020
Part II (Non-tumour Pathology) June 22 – 24, 2020



Course Director & Course Faculty
Helmut H. Popper, Graz, Austria

Faculty

Junya Fukuoka, Nagasaki, Japan

Luka Brcic, Graz, Austria

Ulrike Gruber - Moesenbacher, Feldkirch, Austria

COURSE OBJECTIVES

This two-part course will run for six days and will cover

- common and rare lung and pleural diseases
- biopsy
- cytology
- molecular diagnosis

Each part will consist of lectures, case teaching and discussions.

WITH VIRTUAL
MICROSCOPY

With confirmation of payment you will receive an email notification providing the link and password required to study approximately 300 cases. You may also opt to view the cases online during the course. WLAN internet access will be provided at no additional charge.

For those who prefer a direct and personal view of the glass slides some microscopes will be available at the course location.

This course is designed for trainees as well as for experienced colleagues. The course language is English.

Course parts can be booked separately.

PROGRAM

Part I (Tumour Pathology) June 18 – 20, 2020

This three-day course part will be devoted to common and rare lung and pleural tumours; tumours of childhood will also be covered.

Biopsy diagnosis will be done using an interactive internet based system for digital microscopy.

Part II (Non-tumour Pathology) June 22 – 24, 2020

These three days will cover interstitial lung diseases such as, bronchiolitis-ILD, idiopathic interstitial pneumonias, rare pulmonary and pleura non-tumorous diseases, granulomatous lung diseases, emphysema & COPD.

Also pediatric pulmonary pathology will be discussed.

Case presentations of interstitial lung diseases combined with biopsy interpretation will be included.

The impact of molecular pathology and immunohistochemistry in lung pathology will be discussed during the conference for each part.

Furthermore challenging cases, including infectious diseases, contributed by the participants will be discussed during the course.

COURSE DIRECTOR & FACULTY

Helmut H. Popper Head of Research Unit for Molecular Lung and Pleura Pathology, Diagnostic & Research Institute of Pathology, Medical University Graz, Austria

Junya Fukuoka Chair and director, Department of Clinical Pathology, Kameda Medical Center; Professor, Department of Pathology, Nagasaki University Graduate School of Biomedical Sciences, Japan

Luka Brcic Diagnostic & Research Institute of Pathology, Medical University Graz, Austria

Ulrike Gruber - Moesenbacher Feldkirch, Austria

ACCREDITATION / COURSE CERTIFICATE

The Austrian Medical Chamber has granted **58 credit points (DFP)** to the course (29 DFP Part I, 29 DFP Part II).

The event has been accredited by the European Accreditation Council for Medical Education (**EACCME®**) with **43 European CME*** (Part I 22 CME; Part II 21 CME) credit points.

* Recognised by the American Medical Association as well as by the Royal College of Physicians and Surgeons of Canada

COURSE SCHEDULE

Part I will start on Thursday, June 18 at 8.00 am with registration and will continue with scientific program at 8.30 am. End of Part I is on Saturday, June 20 at 4.00 pm.

Part II will start on Monday, June 22 at 7.45 am with registration and will continue with scientific program at 8.00 am; end of Part II is on Wednesday, June 24 at 4.00 pm.

OVERVIEW HOW TO GET TO GRAZ BY CAR, TRAIN, OR PLANE

Learn more about it at <https://www.graztourismus.at/en/travel-and-transport>

SCHEDULED FLIGHTS TO GRAZ

<https://www.flughafen-graz.at>

MORE INFORMATION ABOUT GRAZ

<https://www.graztourismus.at>

MORE QUESTIONS?

Please contact the organizers:

helmut.popper@medunigraz.at or edith.kleinfurchner@medunigraz.at