

## LOCATION & ACCOMMODATION

**HOTEL WEITZER** (Conference room Styria)

Grieskai 12 - 16, 8020 Graz; <https://www.hotelweitzer.com>

**Accommodation:** We have reserved a limited number of rooms at special rates for course participants at Hotel Weitzer and in other selected hotels in the vicinity. A code for application will be provided along with the invoice.

## COURSE FEES

**Part I (Tumour Pathology)** June 13 – 15, 2019 € 600,00

**Part II (Non-tumour Pathology)** June 17 – 19, 2019 € 600,00

**Whole course (Part I & II)** € 950,00

The course fee includes daily lunch buffets and coffee breaks (except on course free Sunday), “Welcome Buffet” (Part I), “Get together Dinner” (Part II), online course material, printed course manuals for booked course parts, and the course certificate.

**Participants as well as accompanying persons are welcome to join**

### SOCIAL EVENTS:

**Welcome Evening Buffet** June 13, 2019 € 30,00\*

**Excursion** (at course free Sunday) June 16, 2019 € 50,00\*\*

(day trip by bus in the surroundings of Graz; meals included)

**Get-together Dinner** June 18, 2019 € 50,00\*

\*Fee accompanying persons, participants free of charge;

\*\*Fee participants & accompanying persons

## COURSE FELLOWSHIP

For residents from lower income countries reduced or waived course fees and / or (partially) funded hotel expenses will be supported by an educational grant provided by the course.

**Inquiries:** Contact the organizers by E-mail:

[helmut.popper@medunigraz.at](mailto:helmut.popper@medunigraz.at) or [edith.kleinferchner@medunigraz.at](mailto:edith.kleinferchner@medunigraz.at)

## CONTACT / REGISTRATION & PAYMENT

Course office: Ms Edith Kleinferchner  
Diagnostic & Research Institute of Pathology - Medical  
University of Graz  
Neue Stiftingtalstraße 6, 8010 Graz, Austria  
E-mail: [edith.kleinferchner@medunigraz.at](mailto:edith.kleinferchner@medunigraz.at)

**Very limited seating!** Early registration is recommended.

Seating at the program is on a first come, first served basis and will definitely be assigned based on the date of payment of the course fee. The invoice including terms of payment and information about accommodation will be mailed to pre-registrants in the order of their applications. After payment has been received a written confirmation will be sent to all registrants.



Medical University of Graz

# 15<sup>th</sup> POSTGRADUATE COURSE



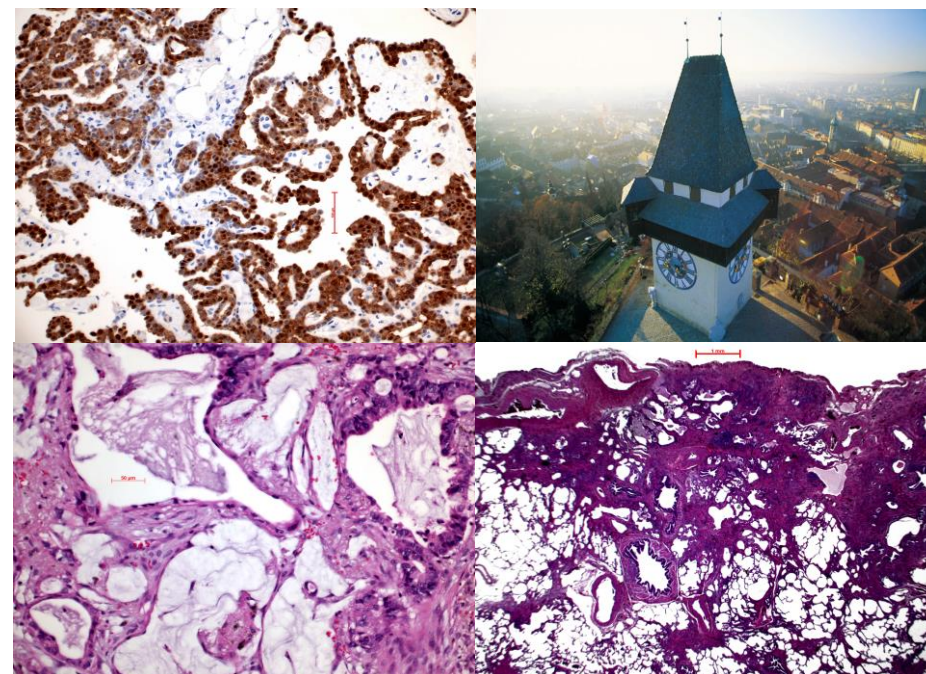
## LUNG & PLEURAL DISEASES

WITH VIRTUAL MICROSCOPY

**Part I (Tumour Pathology)** June 13 – 15, 2019

**Part II (Non-tumour Pathology)** June 17 – 19, 2019

**Graz, Austria**



**Course Director & Course Faculty**  
Helmut H. Popper, MD, Graz, Austria

### Faculty

Marie-Christine Aubry, MD, Rochester, USA

Luka Brcic, MD, Graz, Austria

Ulrike Gruber - Moesenbacher, MD, Feldkirch, Austria

## COURSE OBJECTIVES

---

This two-part course will run for six days and will cover

- common and rare lung and pleural diseases
- biopsy
- cytology
- molecular diagnosis

Each part will consist of lectures, case teaching and discussions.

**WITH VIRTUAL  
MICROSCOPY**

With confirmation of payment you will receive an email notification providing the link and password required to study approximately 300 cases. You may also opt to view the cases online during the course using your electronic device. WLAN internet access will be provided at no additional charge.

For those who prefer a direct and personal view of the glass slides a few microscopes will be available at the course location.

This course is designed for trainees as well as for experienced colleagues. The course language is English.

Course parts can be booked separately.

## PROGRAM

---

### Part I (Tumour Pathology) June 13 – 15, 2019

This three-day course part will be devoted to common and rare lung and pleural tumours; tumours of childhood will also be covered.

Biopsy diagnosis will be done using an interactive internet based system for digital microscopy.

### Part II (Non-tumour Pathology) June 17 – 19, 2019

These three days will cover interstitial lung diseases such as, bronchiolitis-ILD, idiopathic interstitial pneumonias, rare pulmonary and pleura non-tumorous diseases, granulomatous lung diseases, emphysema & COPD.

Alsopediatric pulmonary pathology will be discussed.

Case presentations of interstitial lung diseases combined with biopsy interpretation will be included.

The impact of molecular pathology and immunohistochemistry in lung pathology will be discussed during the conference for each part.

Furthermore challenging cases, including infectious diseases, contributed by the participants will be discussed during the course.

## COURSE DIRECTOR & FACULTY

---

### Helmut H. Popper

Head of Research Unit for Molecular Lung and Pleura Pathology, Diagnostic & Research Institute of Pathology, Medical University Graz, Austria

### Marie-Christine Aubry

Division of Anatomic Pathology, Department of Laboratory Medicine and Pathology, Mayo Clinic Rochester, USA

### Luka Brcic

Diagnostic & Research Institute of Pathology, Medical University Graz, Austria

### Ulrike Gruber-Moesenbacher

Feldkirch, Austria

## ACCREDITATION / COURSE CERTIFICATE

---

The Austrian Medical Chamber has granted 29 credit points (DFP) to course part I, as well as 29 credit points (DFP) to course part II.

European CME credits by the EACCME (European Accreditation Council for Continuing Medical Education) have been requested. The accreditation process is in progress.

### Participants from the USA:

Through an agreement between the European Union of Medical Specialists and the American Medical Association, physicians may convert EACCME credits to an equivalent number of AMA PRA Category 1 Credits™

### Participants from Canada:

Live educational activities, occurring outside of Canada, recognized by the UEMS-EACCME for ECMEC credits are deemed to be Accredited Group Learning Activities (Section 1) as defined by the Maintenance of Certification Program of The Royal College of Physicians and Surgeons of Canada

## COURSE SCHEDULE

---

Part I will start on Thursday, June 13 at 8.00 am with registration and will continue with scientific program at 8.30 am. End of Part I is on Saturday, June 15 at 4.00 pm.

Part II will start on Monday, June 17 at 7.45 am with registration and will continue with scientific program at 8.00 am; end of Part II is on Wednesday, June 19 at 4.00 pm.

### MORE QUESTIONS?

Please contact the organizers:

[helmut.popper@medunigraz.at](mailto:helmut.popper@medunigraz.at) or [edith.kleinferchner@medunigraz.at](mailto:edith.kleinferchner@medunigraz.at)

### GETTING TO GRAZ BY PLANE

Learn more about scheduled flights to Graz at <https://www.flughafen-graz.at>

### MORE INFORMATION ABOUT GRAZ

<https://www.graztourismus.at>